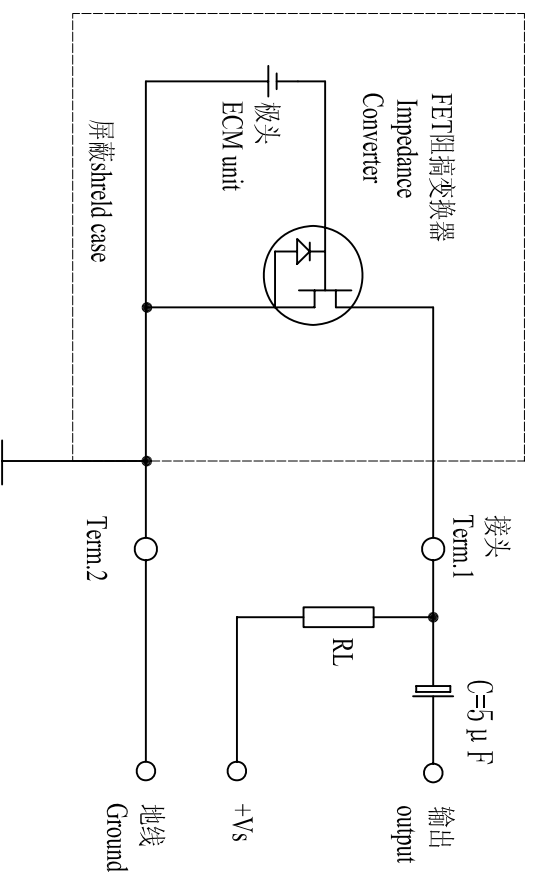


原理图



编号 NO.	项目 Items	规格 Specifications
1	额定电压 Rated Voltage	4.5V
2	工作电压 Operating Voltage	1.5V~10V
3	灵敏度 Sensitivity	-38 ± 2dB at 1KHz(0dB=1V/µ Pa) -58 ± 2dB at 1KHz(0dB=1V/µ bar)
4	消耗电流 Current Consumption	0.5mA Max
5	频率范围 Frequency	100~16,000Hz
6	信噪比 S/N Ratio	≥ 60dB
7	灵敏度减低 Sensitivity Reduction	within-3dB at 1.5V
8	方向性 Directivity	Omnidirectional
9	测试条件 Testing Condition	1000Hz, Vs=4.5V, RL=2.2K Ω
10	壳体材料/颜色 Shell Material/Color	AL/Silver
11	工作温度 Operating Temperature	-25~+55 °C
12	贮存温度 Store Temperature	-25~+55 °C
13	重量 Weight	0.1g

备注  
Note:

TOLERANCES UNLESS NOTED OTHERWISE		DRAWN		KEPO MODEL NO.		CUSTOMER	
.X ±		DESIGN		KPCM-140H220P-1-V4.5	CUSTOMER NO.		
.XX ±		CHECKED		DWG NO.			
.XXX ±		APPROVED		DATE	05.10.31	VER	1.0
90° FORMED +2° ANGLES -1°		CONTRACT NO.		KF3,002,012		UNIT	mm
FIRST ANGLE PROJECTION		AGENCY APPROVAL		KEPO CO., LTD.		SCALE	
				TEL: (+86)574-88370330		SHEET	
				FAX: (+86)574-88370329			

△	NO.	DATE	REVISION	REFERENCE DWG
△				
△				
△				

1	2	3	4	5	6	7	8
---	---	---	---	---	---	---	---